

What's Your PeerScore?

PeerScoresm helps hospital groups and ASCs measure, monitor and compare practitioner performance, while fully meeting accreditation standards. Customized to fit your needs, PeerScore is a suite of external peer review services that gives your organization a complete solution, from periodic reviews to ongoing evaluation programs.

Many Hospitals and ASCs struggle to meet the never-ending challenge of evaluating the clinical performance of top specialists in a timely, objective and education-oriented manner. Yet tougher peer review accreditation standards and increased pressures to improve quality demand consistent excellence in credentialing, privileging, proctoring and sentinel event analysis. Many organizations also lack the staffing and resources to handle this work in a timely manner, and are looking for a cost effective outsourcing solution that keeps them on track, while following best practices.

PeerScore can help your hospital:

- Gain visibility on specialist performance across all specialties and sub-specialties.
- Meet the intent of the Joint Commission's standards regarding Focused & Ongoing Professional Practice Evaluation.
- Ensure practitioner performance is consistently reviewed by board-certified specialists in active practice, with the same credentials and from similar practice settings.
- Eliminate conflicts of interest and sensitivities that are inherent in many hospitals' internal peer review process.
- Set clear expectations that all physicians' work will be consistently and fairly subjected to peer review.
- Raise transparency & accountability among practitioners.
- Emphasize education and remediation and reduce the punitive aspects of peer review.
- Set the foundation for implementing Pay For Performance (P4P).



PeerScore OPPEsm - The New Standard for Ongoing Review

PeerScore OPPE is a systematic external peer review program that you can deploy at your hospital or ASC, to gain an ongoing evaluation of each physician's performance at a summary level. PeerScore OPPE complements your existing performance data collection and internal peer review process by providing consistent analysis of a valid sampling of all practitioners' work on a regularly-scheduled interval. PeerScore OPPE allows you to transform your peer review process from a reactive analysis of isolated sentinel events, to the proactive review of a broader range of practitioner work. This supports evidence-based credentialing and moves your process to the next level beyond CVO-based solutions and rubber stamp-oriented re-appointment procedures. It also provides an evidence-based approach to privileging and can be an effective substitute or complement to proctoring. PeerScore OPPE uses patent-pending technology to provide a software-based workflow that makes it easy for medical staff to gain summary performance data on each practitioner, based on actual case analysis.

PeerScore OPPE helps hospitals and ASCs achieve the following:

- Evaluate your physicians' performance on an ongoing basis using AllMed's external peer review workflow solution.
- Develop a cost-effective alternative to difficult and time-consuming data gathering and analysis.
- Overcome physician specialist staffing constraints.
- Ensure an evidence-based approach to peer review, as mandated by accreditation standards.
- Collect performance data over time that allows you to benchmark practitioner performance against peers at the practice, group or national levels.

How PeerScore OPPE Works

It's easy to set up a PeerScore OPPE program at your hospital that is tailored to your needs. We start by gather-

ing data on your hospital's size, target specialties, procedure volumes and quality measures, then build a customized PeerScore OPPE program for your organization. This program provides you with a scheduled routine for pulling cases for practitioners in each target practice area, along with specific volumes, types of cases and other details. Based on this schedule, cases are pulled and sent to AllMed. Upon intake at AllMed, cases are evaluated by our physicians then routed to our board-certified specialists for review, using our patent-pending PeerScore OPPE workflow software. Each case is evaluated according to practice-specific criteria, using PeerScore's numerical physician rating system.



PeerScore provides a numerical evaluation of performance according to the following ratings:

Rating	Description
1	Standard of Care met in all regards
2	Standard of Care met with some concerns
3	Standard of Care met with risk of negative outcome
4	Standard of Care not met with negative outcome

Ratings for each case against practice-specific criteria are tabulated in the PeerScore OPPE Physician Peer Review Summary, and scores for each case and criteria are color coded, along with a summary score and color code. This color coding scheme allows medical staff to quickly identify specific case-related areas of concern, as well as overall practice patterns that are triggers for a focused evaluation, using PeerScore FPPE, described below.

PeerScore OPPE Group Evaluation Summary - For Practitioner Benchmarking

The power of PeerScore OPPE is found in the Group Evaluation Summary, which allows you to benchmark the performance of individual physicians against other specialists in the same practice, at your hospital's group level, or against all specialists being reviewed by the PeerScore OPPE program.

Cost Effective & Predictable

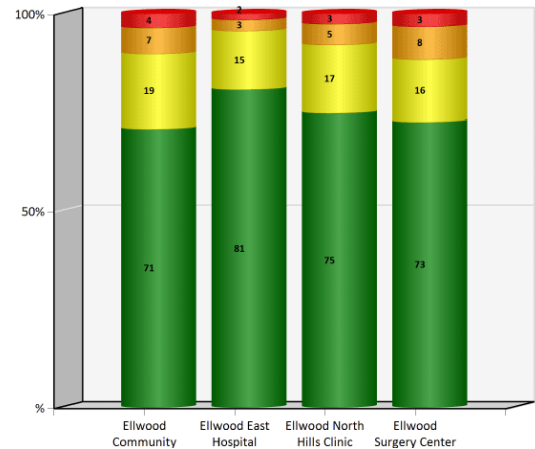
Each case reviewed under PeerScore OPPE costs far less than traditional in-depth external peer review reports, since the reports are in numerical and graphical format only. This allows you to evaluate a broader sampling of each practitioner's work at lower unit costs, while still gaining the benefit of an external peer reviewer. PeerScore OPPE is priced based on the scheduled volume and interval of cases to be reviewed, and billed on a regular basis that can be easily budgeted for. PeerScore OPPE is priced at a low fixed fee per case.

PeerScore OPPE - An Ounce of Prevention...

Once implemented, PeerScore OPPE begins to generate immediate improvements in practitioner performance, by raising transparency and accountability. Practice patterns which require training or other remediation can be identified proactively, and in most cases will help you to take corrective actions before they lead to negative outcomes. This helps transform your quality management system from *reactive to proactive*.

AllMed PeerScore OPPE - Ellwood Regional Medical Center / Cardiology/Cardiovascular

Ellwood Regional Medical Center Locations

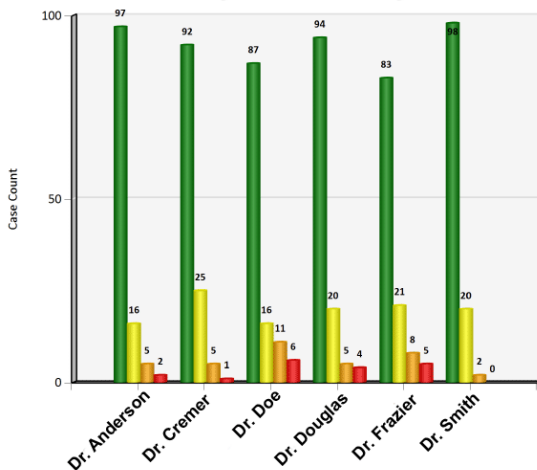


Scoring Legend

- The Standard was met in all regards.
- The Standard was met. There are some concerns not expected to affect outcome adversely.
- The Standard was not met. Event could be expected to have an adverse affect on the patient outcome.
- The Standard was not met with negative outcome.

AllMed PeerScore OPPE - Ellwood Regional Medical Center / Cardiology/Cardiovascular

Ellwood Regional Medical Center Physician Summary



Scoring Legend

- The Standard was met in all regards.
- The Standard was met. There are some concerns not expected to affect outcome adversely.
- The Standard was not met. Event could be expected to have an adverse affect on the patient outcome.
- The Standard was not met with negative outcome.

PeerScore FPPESM For Focused Reviews

PeerScore FPPE is AllMed's in-depth external peer review solution that helps hospitals and ASCs to perform focused reviews on individual physicians or practice groups, and gain a comprehensive perspective on their performance, whether it be for an individual case or group of cases. PeerScore FPPE is designed to meet or exceed TJC and other accreditation body standards for evidence-based peer review. Common uses of PeerScore FPPE include:

- Following up on concerns identified on cases reviewed through PeerScore OPPE
- Credentialing of new practitioners
- Re-credentialing of existing medical staff
- Adding new privileges
- Performing in-depth follow-up on sentinel events or other issues of concern
- As an effective substitute for proctoring

Many hospitals and ASCs struggle with the above peer review functions, due to staffing constraints, lack of available specialty expertise, conflict of interest, and organizational sensitivities. PeerScore FPPE provides an effective remedy to these challenges, allowing your organization to improve physician performance through a consistent, evidence-based review process that is educational and non-punitive. For each PeerScore FPPE case reviewed, we select a top practitioner from our panel of over 400 board-certified specialists in active practice, performing in a relevant practice setting. The PeerScore FPPE Hospital Peer Review Report includes the following narrative: a summary of the case, an analysis of the practitioner's performance and a list of recommended remedial actions.

Recommended Specialties

PeerScore OPPE & PeerScore FPPE are targeted mainly on specialty areas that are typically more difficult for hospitals to systematically evaluate with their own resources, and which are high profile/high risk practices in most facilities, including:

- [Interventional Cardiology](#)
- [Neurosurgery – spine](#)
- [OB/GYN](#)
- [Urology](#)
- [Bariatric Surgery](#)
- [Nephrology](#)
- [ER](#)
- [Cardiovascular Surgery](#)
- [Neurosurgery – brain](#)
- [Orthopedic Surgery](#)
- [Radiology](#)
- [Anesthesiology](#)
- [General Surgery](#)
- [Hospitalists](#)



Risk-Free Consultation

Interested in finding out how PeerScore can help your organization improve quality and patient safety? Call us for a free consultation. We'll gather data and provide you with a no-obligation proposal, complete with suggested review intervals, case counts and pricing.

Or visit our website at www.allmedmd.com to learn more.

About AllMed Healthcare Management

Founded in 1995, AllMed is a URAC-accredited independent review organization (IRO) serving leading hospital groups, insurance payers and medical management firms nationwide. Board-certified specialists in active practice conduct AllMed's evidence-based medical reviews. AllMed's clients include leading national hospital chains, ambulatory surgery centers (ASCs), critical access hospitals and regional healthcare organizations.



621 SW Alder Street
Suite 740
Portland, Oregon 97205
800.400.9916 • 503.274.9916
Fax 503.223.6244
www.allmedmd.com



For information about AllMed, visit the company's website at www.allmedmd.com